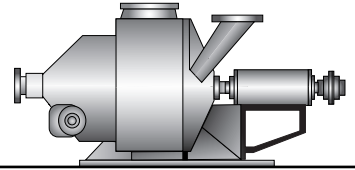
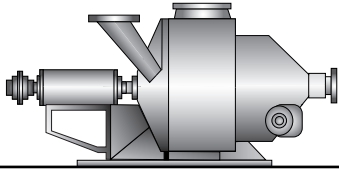
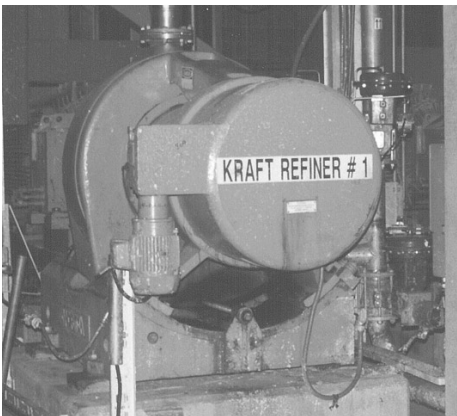
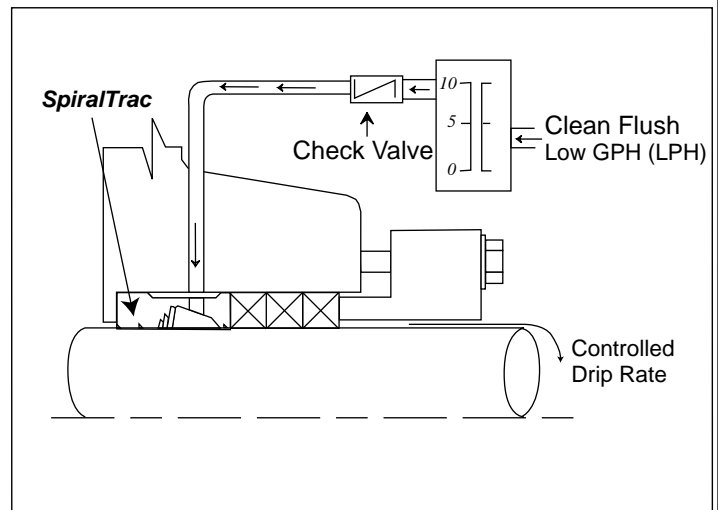
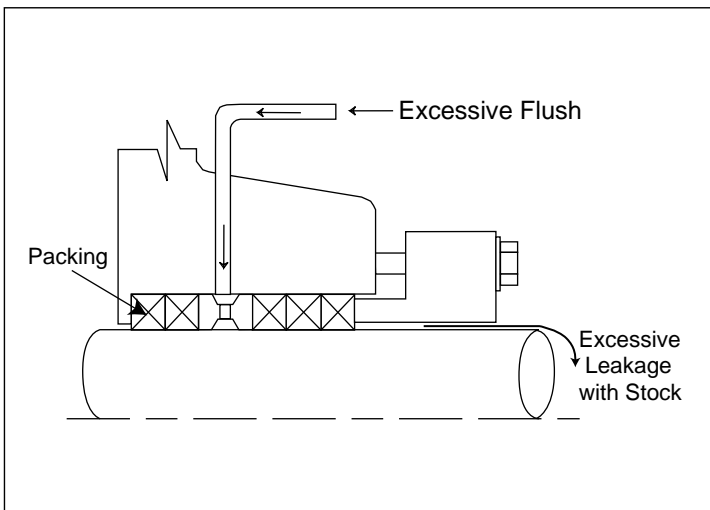


Pulp & Paper Refiners

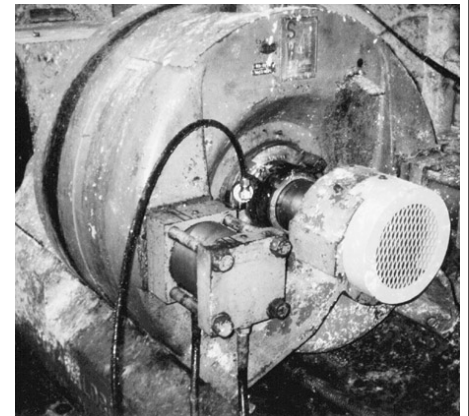


Typical Packed Box

SpiralTrac Enhanced Environment



- SpiralTrac** Reduces flush required to as low as 8-10 GPH (30 -37 LPH).
- SpiralTrac** Increases MTBF.
- SpiralTrac** Requires less packing .
- SpiralTrac** Reduces shaft or sleeve wear.
- SpiralTrac** Enables packing to operate at a controlled drip rate with fewer adjustments.
- SpiralTrac** Greatly reduces leakage rate and house keeping costs.



SpiralTrac Enhanced Environment

Results that will surpass anything you have experienced in the past.

Listed below are a few of the Refiners where *SpiralTrac*[™] Environmental controllers are installed.

Refiner Model	Size	<i>SpiralTrac</i> [™] Part Number for Carbon Graphite PTFE material. *	<i>SpiralTrac</i> [™] Part number for Glass filled PTFE material. *
Sprout Waldron	26"	PI5062RS6062 (ESC) 1L1.000 PI5062LS6062 (ESC) 1L1.000	PI5062RS6062 (GLF) 1L1.000 PI5062LS6062 (GLF) 1L1.000
	34"	PI6125RS7375 (ESC) 2L1.000 PI6125LS7375 (ESC) 2L1.000	PI6125RS7375 (GLF) 2L1.000 PI6125LS7375 (GLF) 2L1.000
	42"	PI8010RS9265 (ESC) 2L1.000 PI8010LS9265 (ESC) 2L1.000	PI8010RS9265 (GLF) 2L1.000 PI8010LS9265 (GLF) 2L1.000
Beloit DD	20"&24"	PI4625RS5625(ESC) 22334 PI4625LS5625(ESC) 22334	PI4625RS5625(GLF) 22334 PI4625LS5625(GLF) 22334
	26"&30"	PI5750RS7000(ESC) 1L1.875 PI5750LS7000(ESC) 1L1.875	PI5750RS7000(GLF) 1L1.875 PI5750LS7000(GLF) 1L1.875
	34"&38"	PI6250RS7500(ESC) 2L1.375 PI6250LS7500(ESC) 2L1.375	PI6250RS7500 (GLF) 2L1.375 PI6250LS7500 (GLF) 2L1.375
	42"&46"	PI8250RS9750(ESC) 22313 PI8250LS9750(ESC) 22313	PI8250RS9750 (GLF) 22313 PI8250LS9750 (GLF) 22313

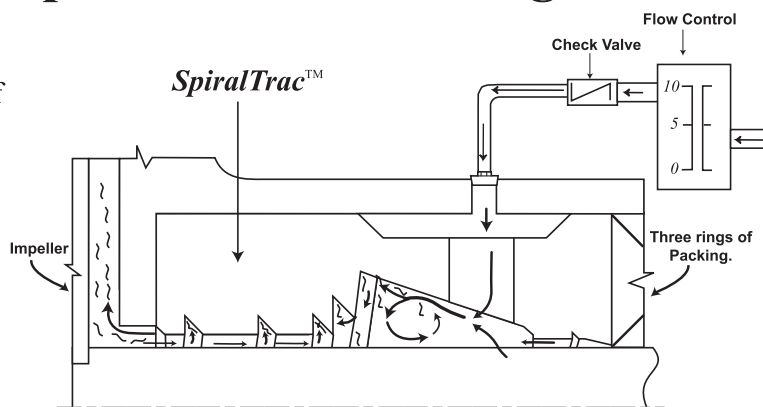
NOTES:

1. The above part numbers are for *SpiralTrac* Version P and are to be used with mechanical packing only. When using mechanical seals for this application consult EnviroSeal.
2. *The referenced Refiners are double ended, one left and one right rotation *SpiralTrac* are required for each installation.
3. Consult EnviroSeal for other Refiner Types & Models.

How *SpiralTrac* Operates With Packing

By design, the *SpiralTrac*[™] Version P enables greatly reduced flush through enhanced utilization of the flow and centrifugal effects around the rotating shaft.

Normally fibers accumulate under the bottom rings of packing, causing shafts and sleeves to wear. *SpiralTrac*[™] creates a "cleaner" environment below the packing, thereby reducing erosion. The benefits of high quality packing, low leakage, fewer adjustments, and reduced wear rates can finally be utilized. The use of three rings of packing is recommended.



Types Of Refiners Operating With A *SpiralTrac* Enhanced Environment:

Andritz

Beloit

Sprout Waldron

Sprout Bauer

Sunds

The information contained in this bulletin is accurate at time of print. The purchaser is responsible for ensuring the dimensions, quantity and applications suitability meet end-user requirements. Most products are "manufactured to order"; therefore, EnviroSeal Engineering Products Ltd. retains the right to individually authorize returns based upon the potential for resale of the products within a reasonable period of time.

Questions: Ask your local Distributor or contact EnviroSeal directly.



EnviroSeal
Engineering Products Ltd
2456 Rocky Lake Drive
Waverley, N.S. Canada B2R 1R6

Copyright © 2007
EnviroSeal Engineering Products Ltd

Tel: (902) 861-3464
Fax: (902) 861-3522
Tel: 1-800-884-7325 (North America only)
www.enviroseal.ca
Email: sales@enviroseal.ca