

# SpiralTrac™ Seal Version

## Quote Form

### Required Information

Note: For vertical turbines please refer to the *Vertical Turbine Quote Form* at [enviroseal.ca](http://enviroseal.ca)

Mechanical seal being used: \_\_\_\_\_ Flush available:  No  Yes\* \*Rate: \_\_\_\_\_

Units of measurement:  Inch  Metric

Shaft size\*: \_\_\_\_\_  
\*or rotating element: sleeve, impeller hub, seal OD etc.

Bore size: \_\_\_\_\_ First obstruction: \_\_\_\_\_

Shaft rotation as viewed from the motor end\*:  **R** CW  **L** CCW  
\*Double ended pumps require both R and L devices

### Version

**F** (Flush required)  **N** (Non fibrous applications)  **D** (Fibrous applications)  **C** (Chemical intermittent applications)

### Installation Type

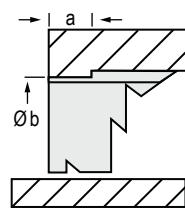
**Type A**

a width: \_\_\_\_\_

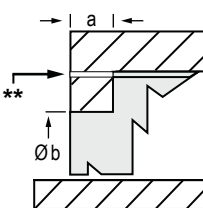
Øb diameter: \_\_\_\_\_

\*option depends on throat diameter

Integral air vent option\*

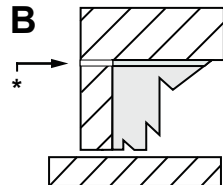


drilled air vent option\*



\*\*recommended 0.156" (3.96mm) vent hole to release air when flooding.

**Type B**



\*recommended 0.156" (3.96mm) vent hole to release air when flooding.

**Type E**

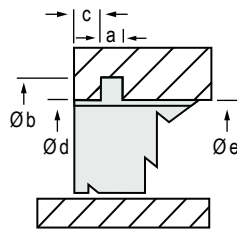
a width: \_\_\_\_\_

Øb diameter: \_\_\_\_\_

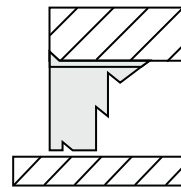
c width: \_\_\_\_\_

Ød diameter: \_\_\_\_\_

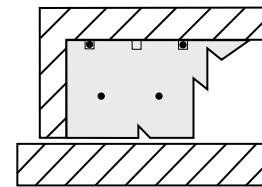
Øe diameter: \_\_\_\_\_



**Type I**



**Type S**



### Material

- ESC** (Carbon filled PTFE)
- 316** Stainless Steel
- 416** Stainless Steel
- 17-4PH** Stainless Steel
- BRZ** (660 Bronze)
- Other:** \_\_\_\_\_

### Extra Information

#### Equipment

Make: \_\_\_\_\_

Model: \_\_\_\_\_

Size: \_\_\_\_\_

RPM: \_\_\_\_\_

Product: \_\_\_\_\_

Solids %: \_\_\_\_\_

Notes: \_\_\_\_\_

#### Distributor

Company: \_\_\_\_\_

Specialist: \_\_\_\_\_

P.O.#: \_\_\_\_\_

Customer: \_\_\_\_\_

Temperature: \_\_\_\_\_



2456 Rocky Lake Drive  
Waverley, Nova Scotia, Canada  
B2R 1R6

[enviroseal.ca](http://enviroseal.ca)  
[info@enviroseal.ca](mailto:info@enviroseal.ca)  
+1 (902) 861-3464

This document is available online at [enviroseal.ca](http://enviroseal.ca). Please email filled out form to [support@enviroseal.ca](mailto:support@enviroseal.ca)

The information contained in this bulletin is accurate at time of print. The purchaser is responsible for ensuring the dimensions, quantity and applications suitability meet end user requirements. Most products are manufactured to order; therefore, EnviroSeal Engineering Products Ltd. retains the right to individually authorize returns based upon the potential for resale of the products within a reasonable period of time. Patent Protected WorldWide. SpiralTrac is a trademark of EnviroSeal Engineering Products Ltd.