

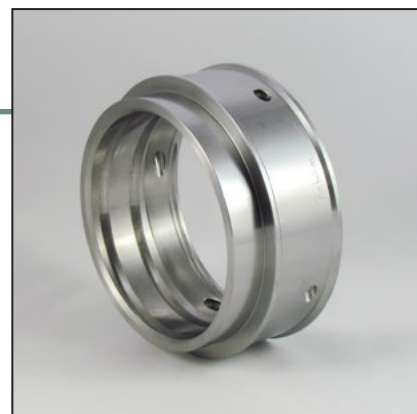
SpiralTrac™ for KREBS® millMAX™ Slurry Pumps



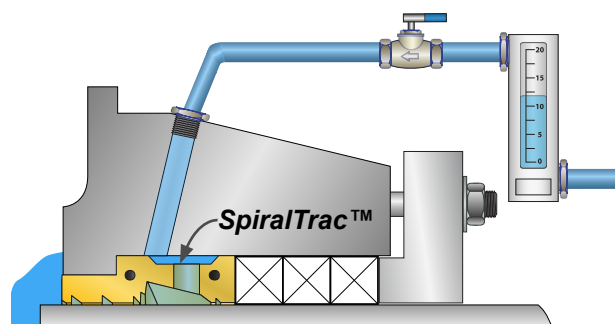
Packing Version SpiralTrac™ specifically designed to fit in KREBS millMAX™ Series Slurry Pumps. The SpiralTrac Environmental Controller replaces the OEM L-shaped bushing and bottom packing ring (high flow configuration) or the bottom packing ring and lantern ring (low flow configuration).

Benefits

- Reduced flush with the use of flow controller
- Controlled leakage to a drip rate with fewer gland adjustments
- Greatly reduced sleeve wear
- Packing is less sensitive to dirt in flush water



KREBS Pump Model	Size	SpiralTrac Part #	Packing rings required
MM80	3x2-9	PM06400RS08300(XXX)11-0648	3
MM100	4x3-12	PM08600RS11200(XXX)11-0649	3
MM100	4x3-17	PM08600RS11200(XXX)11-0649	3
MM150	6x4-16	PM11000RS14200(XXX)11-0650	3
MM150	6x4-21	PM11000RS14200(XXX)11-0650	3
MM200	8x6-20	PM11000RS14200(XXX)11-0650	3
MM200	8x6-24	PM11000RS14200(XXX)11-0650	3
MM250	10x8-24	PM14000RS17800(XXX)11-0651	3
MM300	12x10-30	PM14000RS17800(XXX)11-0651	3
MM350	14x12-36	PM17780RS21700(XXX)11-0622	3
MM400	16x14-39	PM17780RS21700(XXX)11-0622	3
MM500	20x18-46	PM22860RS28000(XXX)11-0656	4
MM600	24x20-54	PM27940RS33100(XXX)11-0623	4
MM700	28x26-64	PM27940RS33100(XXX)11-0623	4
UM900	-	PM36830RS42000(XXX)12-0107	5



Notes

All SpiralTracs are designed to use the flush port closest to the impeller end and have extra clearance on the ID.

SpiralTrac is axially split for ease of installation without pump disassembly. If solid device is required, please contact EnviroSeal.

Find existing KREBS millMAX successes in our literature section at enviroseal.ca

Please replace "XXX" with Material ID for complete part # when ordering.

Common Materials

Material ID	Material	Application
ESC	Carbon graphite PTFE	Engineered Polymer used in a wide variety of applications.
316	316 stainless steel	Used in corrosive services.
416	416 stainless steel	Ideal for erosive services where chemical compatibility is not an issue.
174*	17-4PH stainless steel	Ultimate wear resistance for tough slurry services.

*heat treating option is available for 17-4PH stainless steel material.

Find all our materials on enviroseal.ca or email us at support@enviroseal.ca

For the ultimate sealing solution, order as a **Chesterton SuperSet** with high quality Chesterton packing.



For ordering, please contact your local A.W. Chesterton representative or email support@enviroseal.ca

Proudly distributed Worldwide by:



EnviroSeal Engineering Products Ltd.
2456 Rocky Lake Drive • Waverley • Nova Scotia • CANADA • B2R 1R6
Tel: (902) 861-3464 Fax: (902) 861-3522
info@enviroseal.ca • enviroseal.ca

© 2020 EnviroSeal Engineering Products Ltd.
SpiralTrac is a trademark of EnviroSeal Engineering Products Ltd.
KREBS millMAX is a trademark of the FLSmidth Group.

