

Version D Type I SpiralTrac™ in White Water Application



Pulp & Paper | White Water | Mechanical Seal | NO FLUSH

Application Info & Challenge

GOULDS 3196 MT & LTX Pumps

Process: white water

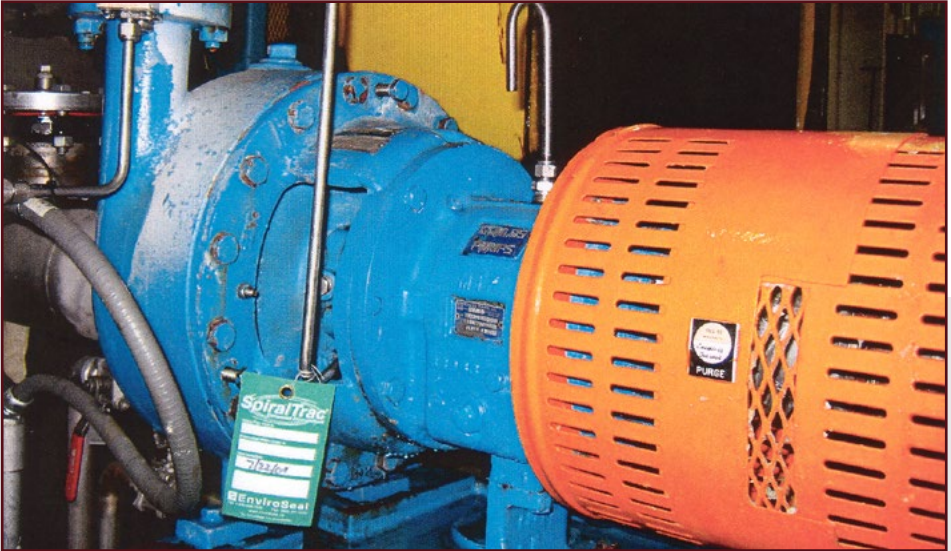
- Excessive flush and leakage with conventional packing.
- Severe sleeve wear!
- High maintenance costs.

Solution & Result

- SpiralTrac Version D Type I** (impeller side installation) installed with a mechanical seal.
- Now running with **no flush!**
- Dramatically increased MTBR.
- Dramatically decreased operating and maintenance costs.
- Customer very happy with the results.



Version D SpiralTrac 316 material



GOULDS 3196 MTX with SpiralTrac installed

For more information please send an email to us at support@enviroseal.ca. We hope to hear from you!



2456 Rocky Lake Drive • Waverley • Nova Scotia • CANADA • B2R 1R6
+1 (902) 861-3464 • info@enviroseal.ca • enviroseal.ca
© 2020 EnviroSeal Engineering Products Ltd.
SpiralTrac™ is a trademark of EnviroSeal Engineering Products Ltd. • SS01267-130100

