

SpiralTrac™ FIRST Device and 1730 Packing in Bleaching Tower Agitators

Pulp & Paper | Agitator | Packing



Application Info & Challenge

Frequent re-packing issues, current MTBR is around 3 months!

Customer goals are:

1. Increasing MTBR!
2. Ensuring that the shaft is aligned with stuffing box.
3. Avoiding the usage of CMS 2000.
4. The equipment is being installed in bleaching towers and it has to be compatible with chlorine dioxide.

Solution & Result

- **SpiralTrac™ FIRST Device** made of carbon graphite (ESC) material, part# PM11000RS14600(ESC)20-0285R
- 3 rings of Chesterton 1730 Mill Pack™ Packing

With the removal of the Ingersoll Rand agitators, it was possible to install SpiralTrac devices into 6 of the 10 agitators. The others had too much wear.

First solution installed: Nov. 2020

In the 6 agitators where the solution has been implemented, the equipment MTBR was increased from 3 months to 12 months, only changing the packing once a year during plant shutdown! Customer is planning to install this solutions in the other agitators at the 2024 plant shutdown.

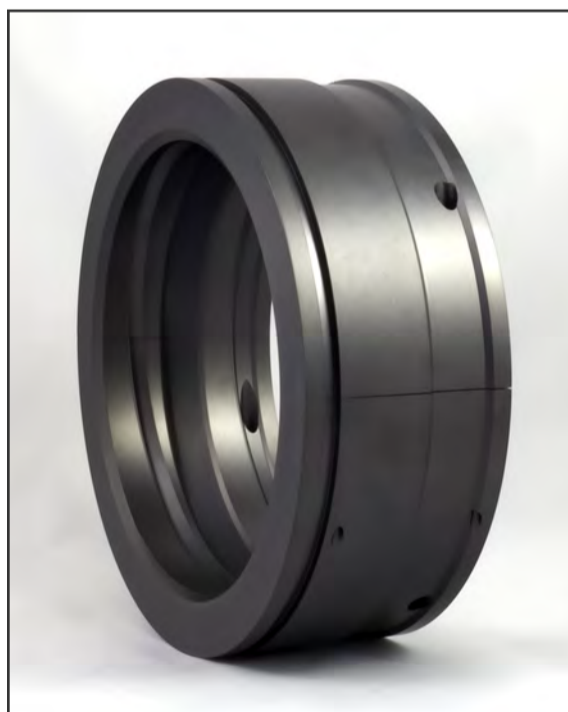
Completely eliminated unscheduled down time!



Disassembled Equipment



SpiralTrac being installed, green tag attached to equipment



SpiralTrac FIRST Device (not the exact device used in application)



Chesterton 1730 Packing

For more information please send an email to us at support@enviroseal.ca. We hope to hear from you!

