

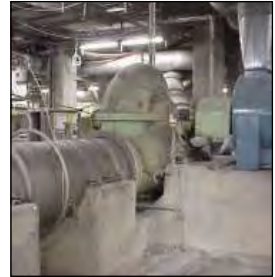
Application Highlight



Pulp & Paper | Paper Stock | Mechanical Seal

Application Info & Challenge

- **Industry:** Pulp & Paper
- **Location:** Sweden
- **Equipment:** Scanpump Z22 fan pump
- **Product:** Paper Stock, ambient temperature
- **Speed:** 960 RPM
- **Pressure:** 3 bar g



Scanpump Z22 fan pump

Previously packed. Requires frequent adjustments and repacking. Issues with excessive sleeve wear.



442 seal

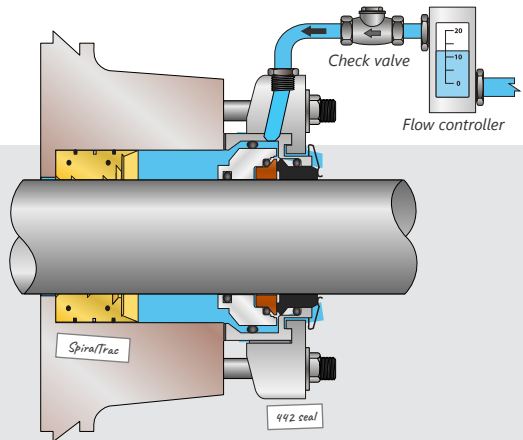


Chesterton Solution installed

Solution & Result

- Chesterton 442® Split Seal 145 MM SA RSC/RSC
- **SpiralTrac™** Version F Type S, made of ESC material
- Flush: 4 l/min

First installed November 2000, running leak free as of Dec 2017! This solution has quickly become the standard for this application at the paper mill.



Split Version F Type S SpiralTrac

For more information please send an email to us at support@enviroseal.ca. We hope to hear from you!

