

# Application Highlight



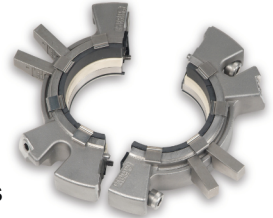
Power | Dirty River Water | Mechanical Seal



No Flush

## Application Info & Challenge

- **Industry:** Hydro power
- **Location:** Catalonia, Spain
- **Equipment:** QTY 1 vertical hydro turbine
- **Product:** Dirty river water, ambient temperature
- **Speed:** 600 RPM
- **Pressure:** 7 bar



442 Split Seal

Previous seal is OEM lip seal on steel sleeve. Seal needs to run either on clean water or on pressurized filtered flush, eventually abrasives can wear the seal out.

## Solution & Result

- Chesterton 442® Split Seal  
310 mm RSC/RSC S EP
- **SpiralTrac™** made of ESC material

First installed March 2017, a year later (April 2018) this solution was still running **leak free and flushless**.



*Vertical Turbine installed with Chesterton solution running leak free and flushless.*

For more information please send an email to us at [support@enviroseal.ca](mailto:support@enviroseal.ca). We hope to hear from you!

