

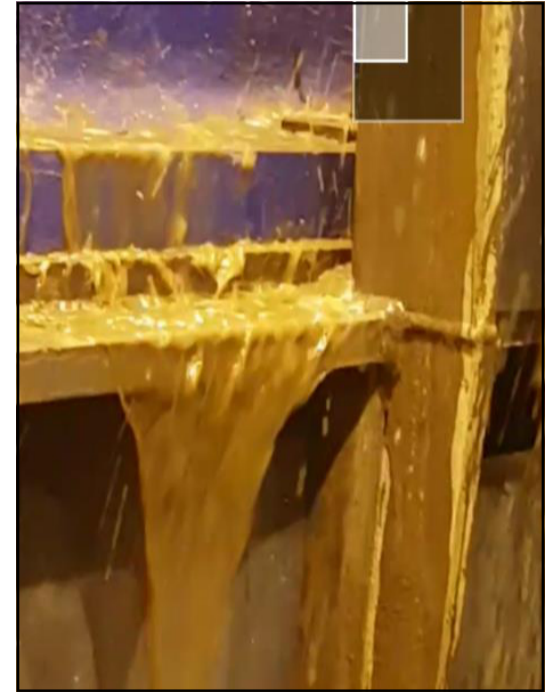
# Mining Gland Water Pump Mechanical Seal & SpiralTrac Upgrade



Mining | River Water | Mechanical Seal



No Flush



Heavy Leakage, Challenging Conditions

## Application Info & Challenge

Sealing pond or river water pumps can be very challenging when external seal or packing environmental controls are unavailable. **Seasonal changes** in water quality can be very disruptive to seal or packing performance. Sealing options are limited when these conditions are present.

Compression packing was used with inconsistent performance and often created upstream system downtime due to gland water feed interruptions to other equipment.

## Solution & Result

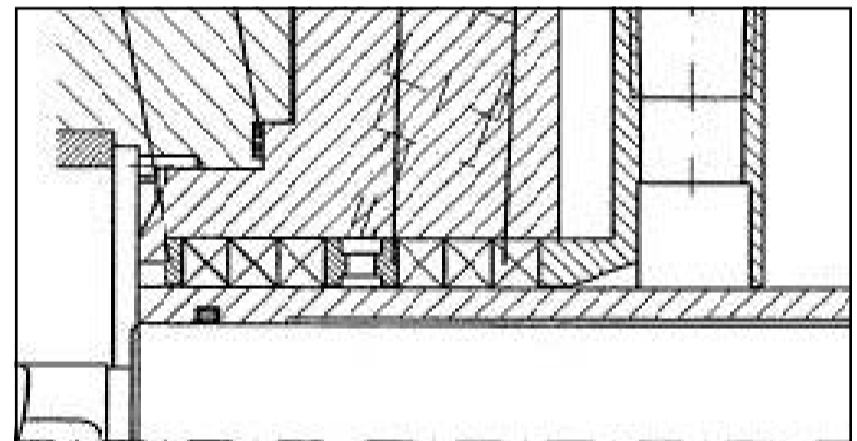
- Chesterton 180 Cartridge Seal
- **SpiralTrac Version N Type B**

Replaced packing and lantern ring with the mechanical seal and SpiralTrac™. No flush was utilized because of the robust nature of the 180 seal and the optimal operating environment thanks to the SpiralTrac.

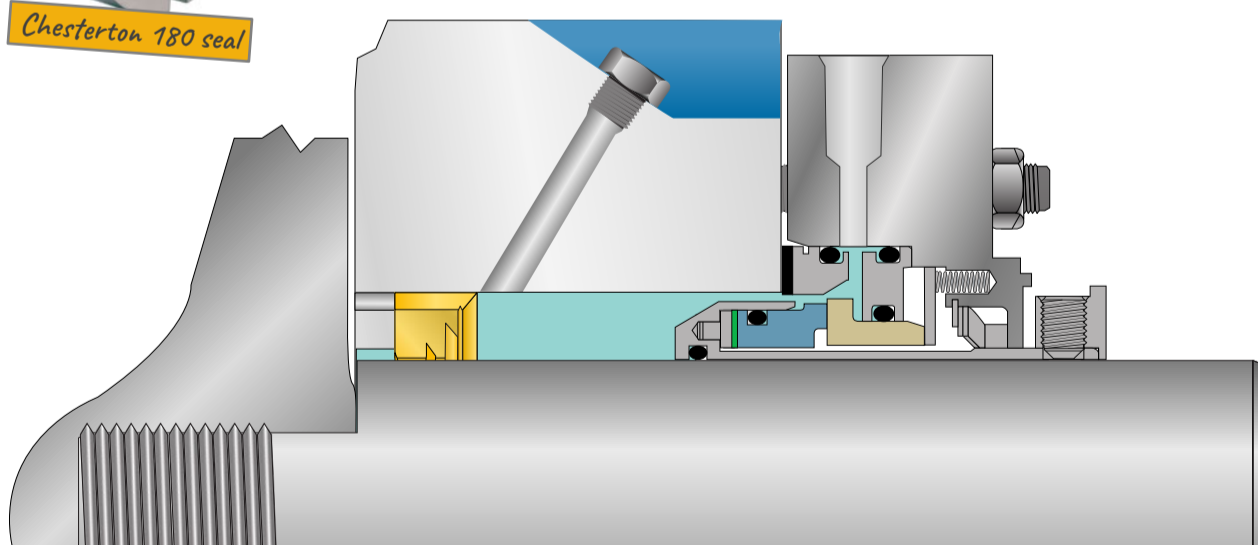
Increased MTBR from 3-6 months to **3+ years!**



No more packing adjustment and replacement.  
No more shaft sleeve replacement. External flush filtering costs and equipment avoided.  
Upstream flush water supply maintained!



Original Stuffing Box 3L3 Setup with a Total of 6 Rings of Packing



For more information please send an email to us at [support@enviroseal.ca](mailto:support@enviroseal.ca). We hope to hear from you!

