

Horizontal Bulb Turbine Sealed with SpiralTrac™ Adaptor and 442 Split Seal

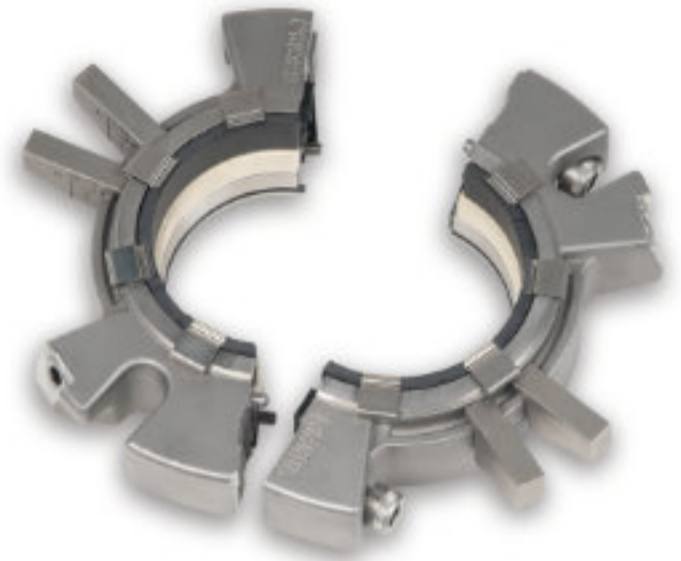


Hydropower | River Water | Mechanical Seal

Application Info & Challenge

- **Horizontal Bulb Turbine, 2.7 MW**
- Speed: 127 rpm
- Suction head: 5 m
- **Product:** River Water, ambient temperature

Original carbon segmented seal failed frequently, causing up to 200 liters per minute leakage. This resulted in premature equipment deterioration and housekeeping issues.



Chesterton 442 Split Mechanical Seal

Solution & Result

- **SpiralTrac™ Adaptor made of Carbon Graphite PTFE (ESC) material**
- Chesterton 442 Split Seal 360 mm SA RSC/RSC S EP

Chesterton Solution was first installed on November 2014.

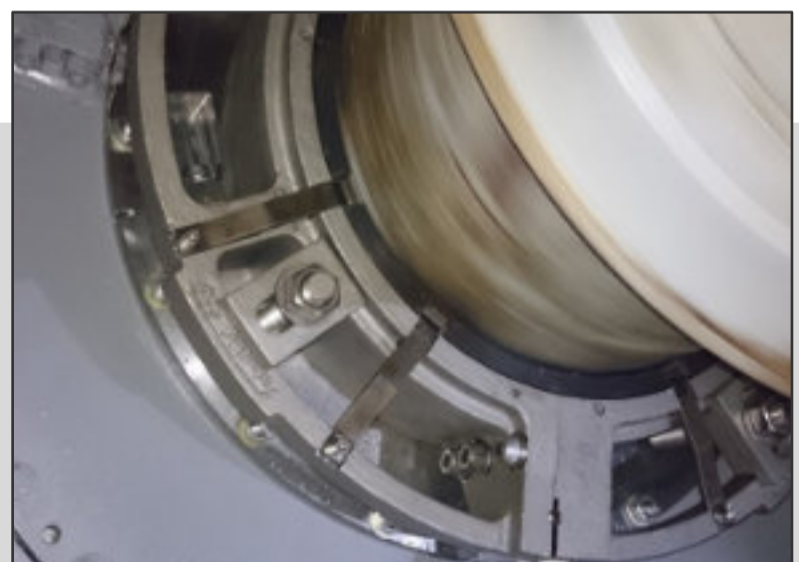
6 years later (as of 2019 November), this application is still running successfully with minimal leakage (60 drops a minute).



SpiralTrac Adaptor AFS11-0100_(ESC)



Excessive leakage with original segmented seal



Chesterton Solution Installed

For more information please send an email to us at support@enviroseal.ca. We hope to hear from you!

