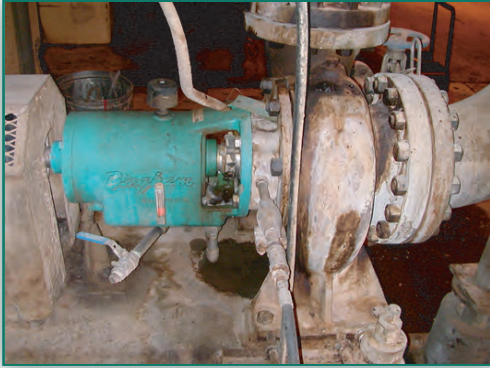


## Application Success Story:

Industry: Pulp & Paper  
Product: Black Liquor  
Sealing Solution: Packing



### • Application Info

- Four Sulzer Bingham 8x10x12 digester cook pumps
- Black Liquor

### • Problem

- Excessive change out of packing (13 times per year)
- Maintenance personal were exposed to the high temperature black liquor every time they changed out the packing.



### • Solution

- SpiralTrac Version P was installed with Chesterton 1760 packing and a Dole control valve.

### • Result

- The pump only had to be repacked three times in two years. That was a 440% reduction in repacks and personnel exposure.
- The flush was reduced from 12 gallons per minute to 1 gallon per minute.
- The gland cooling water, which was 12 gallons per minute, was totally eliminated.

