

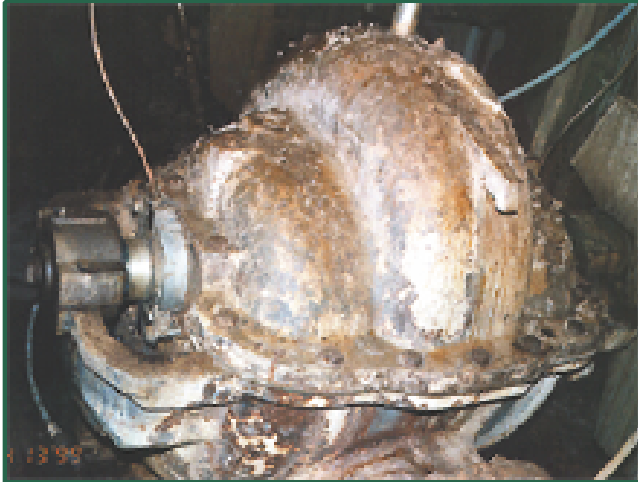


Application Success Story:

Industry: Pulp and Paper

Product: Paper stock

Sealing Solution: Mechanical Seal



- **Problem**

- Excessive stock leakage during operation
- High flush rates;
10 GPM / 37.9 LPM
- High maintenance costs

- **Solution**

- SpiralTrac™ Environmental Controller installed with a 442 mechanical seal
- Installed 18 months ago
- Greatly reduced flush rates;
3 GPM / 11 LPM
- Dramatically increased MTBR
- Dramatically decreased operating and maintenance costs
- Customer very happy

Equipment Info

- Secondary Fan Pump
- Allis Chalmers SD
 - 16X14
 - Double suction
 - 1200 rpm
 - 300 hp



EnviroSeal
Engineering Products Limited

2456 Rocky Lake Drive
Waverley, Nova Scotia B2R 1R6 CANADA
(902) 861-3464 Fax: (902) 861-3522
Email: sales@enviroseal.ca
Website: www.enviroseal.ca

DISTRIBUTED BY:

SpiralTrac is a trademark of EnviroSeal Engineering Ltd.

ST01282-030200