

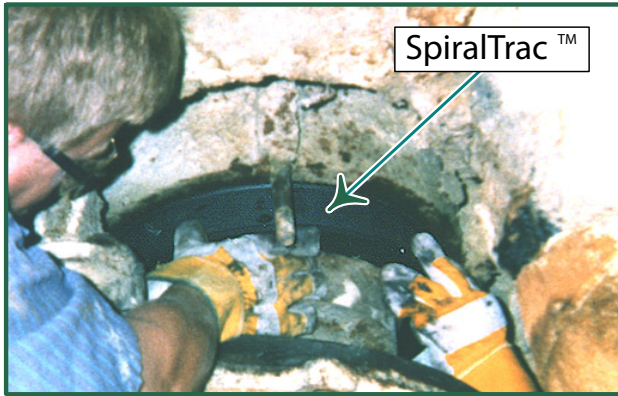


Application Success Story:

Industry: Pulp & Paper

Product: Pulp

Sealing Solution: Packing



Equipment Info

- Black Clawson Pulper
 - 13" (330.2mm) shaft
 - 16" (406.4mm) bore
- 9 units in service

• Problem

- Excessive leakage
- Poor packing life
- Extreme housekeeping concern
- Excessive flush rate at 15-20 GPM / 57-76 LPM
- High maintenance costs

• Solution

- **SpiralTrac™ Version P Type S** installed with 1730 Packing
- Increased packing life
- Flush reduced to a controlled, clean drip rate; good housekeeping
- Flush rate 15-20 GPH / 56-75 LPH
- Dramatically increased MTBR
- Dramatically decreased operating and maintenance costs
- Customer very happy



2456 Rocky Lake Drive
Waverley, Nova Scotia B2R 1R6 CANADA
(902) 861-3464 Fax: (902) 861-3522
Email: sales@enviroseal.ca
Website: www.enviroseal.ca

DISTRIBUTED BY:

SpiralTrac is a trademark of EnviroSeal Engineering Products Ltd.

ST01279-030200