

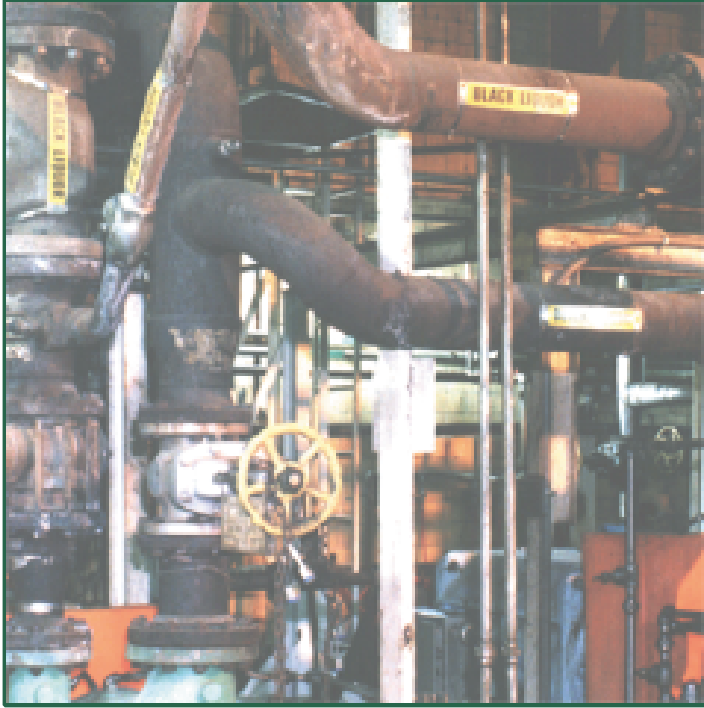


## Application Success Story:

Industry: Pulp & Paper

Product: Black Liquor

Sealing Solution: Packing



### Equipment Info

- Bingham Pump
- Model: 10X12X18

### • Problem

- Excessive leakage and flush  
240 GPH / 909 LPH
- Leakage running into floor drains and sewers
- Severe sleeve wear
- High maintenance costs

### • Solution

- **SpiralTrac™ Version P Type S** installed with 1730 packing
- Reduced flush to  
40 GPH / 151 LPH
- Eliminated leakage at gland
- Dramatically increased MTBR
- Dramatically decreased operating and maintenance costs
- Customer very happy



2456 Rocky Lake Drive  
Waverley, Nova Scotia B2R 1R6 CANADA  
(902) 861-3464 Fax: (902) 861-3522  
Email: sales@enviroseal.ca  
Website: www.enviroseal.ca

DISTRIBUTED BY:

SpiralTrac is a trademark of EnviroSeal Engineering Products

ST01265-130100