

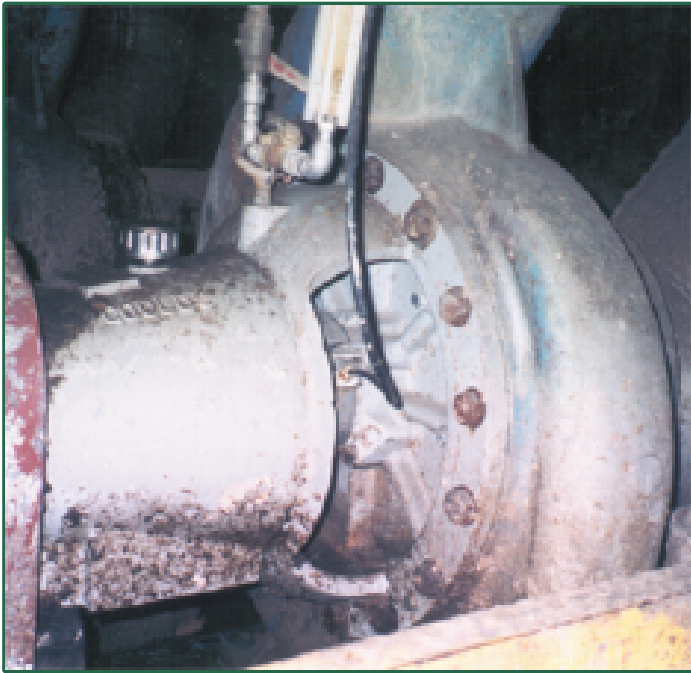


Application Success Story:

Industry: Pulp & Paper

Product: Paper Stock

Sealing Solution: Mechanical Seal



- **Problem**
 - Excessive flush and leakage
300 GPH / 1137 LPH
 - Environment surrounding pump contaminated with water and paper stock
 - Short packing life with excessive sleeve wear
 - High maintenance cost

- **Solution**
 - **SpiralTrac™ Version F Type S** installed with a 442 split mechanical seal
 - Now operating with minimal flush 60 GPH / 227 LPH and no leakage
 - 80% flush water reduction
 - Dramatically increased MTBR
 - Dramatically decreased operating and maintenance costs

Equipment Info

- Process Pump
- Goulds 3175 L
 - 4.750" (120.65mm) sleeve
 - 5.750" (146.05mm) bore



2456 Rocky Lake Drive
Waverley, Nova Scotia B2R 1R6 CANADA
(902) 861-3464 Fax: (902) 861-3522
Email: sales@enviroseal.ca
Website: www.enviroseal.ca

DISTRIBUTED BY:

SpiralTrac is a trademark of EnviroSeal Engineering Products Ltd.

ST01255-060100