



Application Success Story:

Industry: Pulp And Paper

Product: Pulp

Sealing Solution: Packing



- **Application Info**

- Lightnin Mixer
- Temp 200°F / 93°C
- Flush Rate 3-5 GPM / 11.5-19 LPM

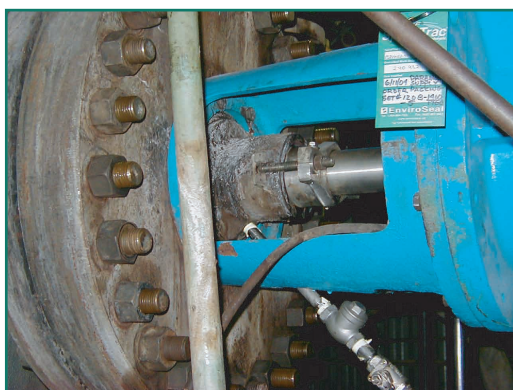
- **Problem**

- Packing was only lasting 6-8 weeks due to shaft deflection
- A device was required to replace the lantern ring and bushing combination while removing abrasives from the stuffing box and secondly providing shaft support when necessary



- **Solution**

- **SpiralTrac™** Version P Type B with a tight inside clearance
- Material: EnviroSeal BGE
- 5 rings of Chesterton 1400R packing



- **Result**

- Eliminated packing failures that had potential to shut down the Digester
- Agitator is now operating with only a drip rate at the gland
- Flush Rate 1-2 GPM / 3.5-7.5 LPM



1310 Rocky Lake Drive
Waverley, Nova Scotia B2R 1R6 CANADA
(902) 861-3464 Fax: (902) 861-3522
Email: sales@enviroseal.ca
Website: www.enviroseal.ca

DISTRIBUTED BY:

Copyright © 2005
Enviroseal Engineering Products Ltd.

ST01550-130105