

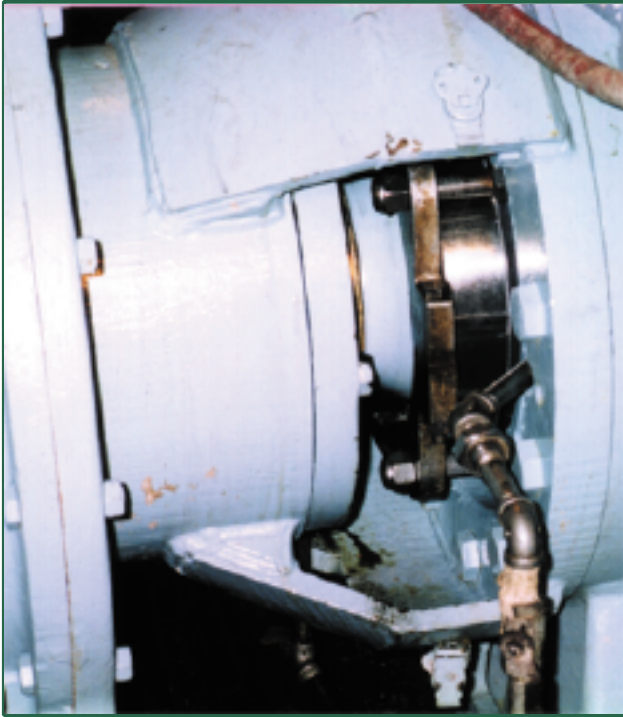


Application Success Story:

Industry: Pulp & Paper

Product: Paper Stock

Sealing Solution: Packing



Equipment Info

- Clove Rotor Thick Stock Pump
- Model 1200
 - 10.000" (254mm) sleeve
 - 11.500" (292.10mm) bore

• Problem

- Excessive flush and leakage
- Severe packing and sleeve wear
- Packing had to be replaced every three weeks
- High maintenance costs

• Solution

- **SpiralTrac™ Version P Type S modified to accept three rings of packing**
- Now operating with minimal flush
- Dramatically increased MTBR
- Dramatically decreased operating and maintenance costs
- Packing is now lasting at least six times longer



DISTRIBUTED BY:

EnviroSeal
Engineering Products Limited

1310 Rocky Lake Drive/P.O. Box 538
Waverley, Nova Scotia B0N 2S0 CANADA
(902) 861-3464 Fax: (902) 861-3522
Email: sales@enviroseal.ca
Website: www.enviroseal.ca

U.S. Patents #5,553,868 #5,167,418
Euro. Pat. App. 0 912 848

ST01257-070100