

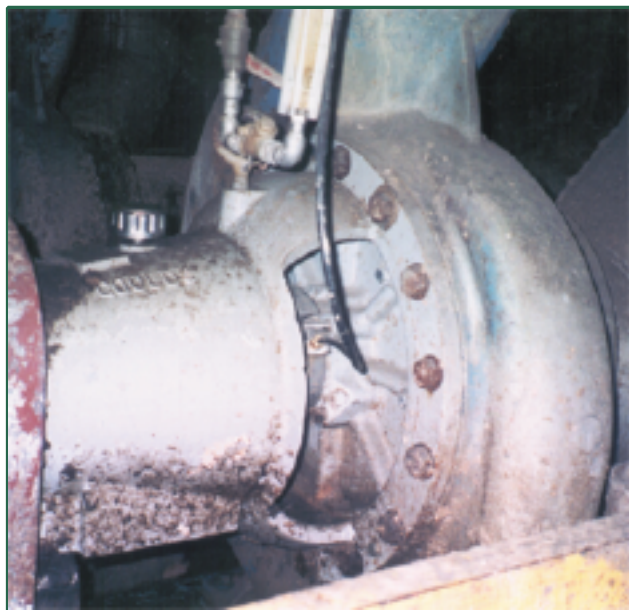


Application Success Story:

Industry: Pulp & Paper

Product: Paper Stock

Sealing Solution: Mechanical Seal



Equipment Info

- Process Pump
- Goulds 3175 L
 - 4.750" (120.65mm) sleeve
 - 5.750" (146.05mm) bore

• Problem

- Excessive flush and leakage
300 GPH / 1137 LPH
- Environment surrounding pump contaminated with water and paper stock
- Short packing life with excessive sleeve wear
- High maintenance cost

• Solution

- **SpiralTrac™ Version F Type S** installed with a 442 split mechanical seal
- Now operating with minimal flush 60 GPH / 227 LPH and no leakage
- 80% flush water reduction
- Dramatically increased MTBR
- Dramatically decreased operating and maintenance costs



1310 Rocky Lake Drive/P.O. Box 538
Waverley, Nova Scotia B0N 2S0 CANADA
(902) 861-3464 Fax: (902) 861-3522
Email: sales@enviroseal.ca
Website: www.enviroseal.ca

DISTRIBUTED BY:

U.S. Patents #5,553,868 #5,167,418
Euro. Pat. App. 0 912 848

ST01255-060100